



NGS

Facilitating Collaboration through the NGS

Connecting Infrastructure

Connecting Research



Key Things From Day 1

- Focus on support and usability
- Expertise and existing facilities
 - Databases, job management, EBI datasets
 - User from sociology to pharmacoepidemiology
- Access to shared tools
 - Up to date and supported
- CLOUDS
 - Deploying and understanding
 - Exploiting
 - Strong evidence of user demand + Institutional interest



Challenges

- Supporting reproducibility
 - Keeping software up to date
- Overhead of learning new stuff
- Trying new things (on demand)
- How to fund central/shared services ?
- Interfaces that can be supported by institutions
- Gaps in software provision - on all available resources



Opportunities

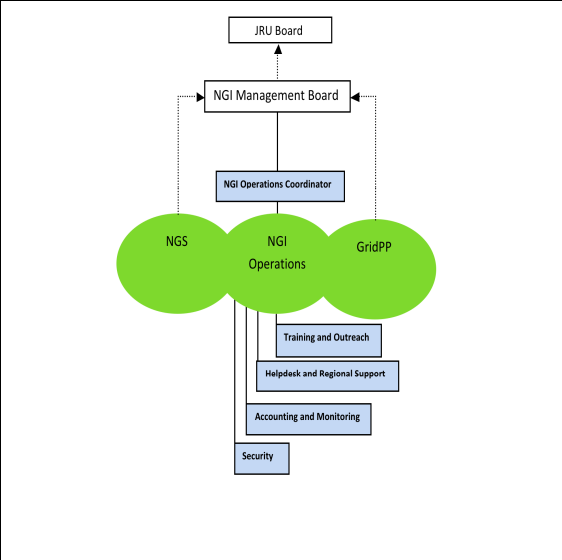
- Install standard/familiar software
- Free services (for students etc)
- Broker between resources in different institutions
- Up-skilling of institutional support
- Virtual Machines and clouds
- Truly common authentication framework



NGS

Thoughts on NGS

- Access to people
- Useful for PhD and post-docs
- National licenses would be nice
- Better promotion of resources



Task

- Configuration Repository (GOCDDB)
- Accounting
- Monitoring
- Helpdesk
- Ticket Triage
- Certification Authority
- COD
- VOMS
- MvProxv
- BDII
- FTS
- File Catalogues
- CIC Portal
- Security Coordination
- WMS

European Grid Infrastructure
Towards a sustainable grid infrastructure

[Contact us](#) | [Site map](#) | [Intranet](#)

- About us
- User Support
- Technology
- Policy
- Infrastructure
- Publications
- Projects
- Collaboration

Welcome

EGI.eu coordinates the European Grid Infrastructure with National Grid Initiatives, European International Research Organisations and other parties, to provide a generic e-infrastructure for all European researchers.

[Video presentation](#)

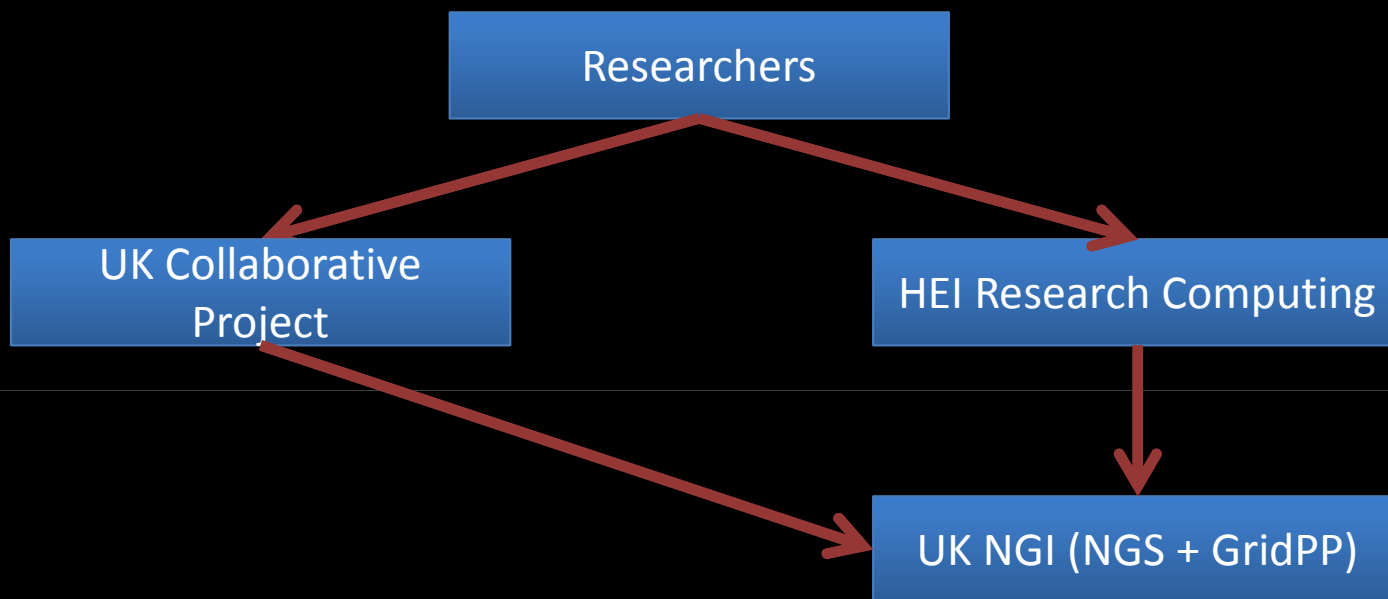
Connecting Infrastructure

Connecting Research



NGS

Gateway



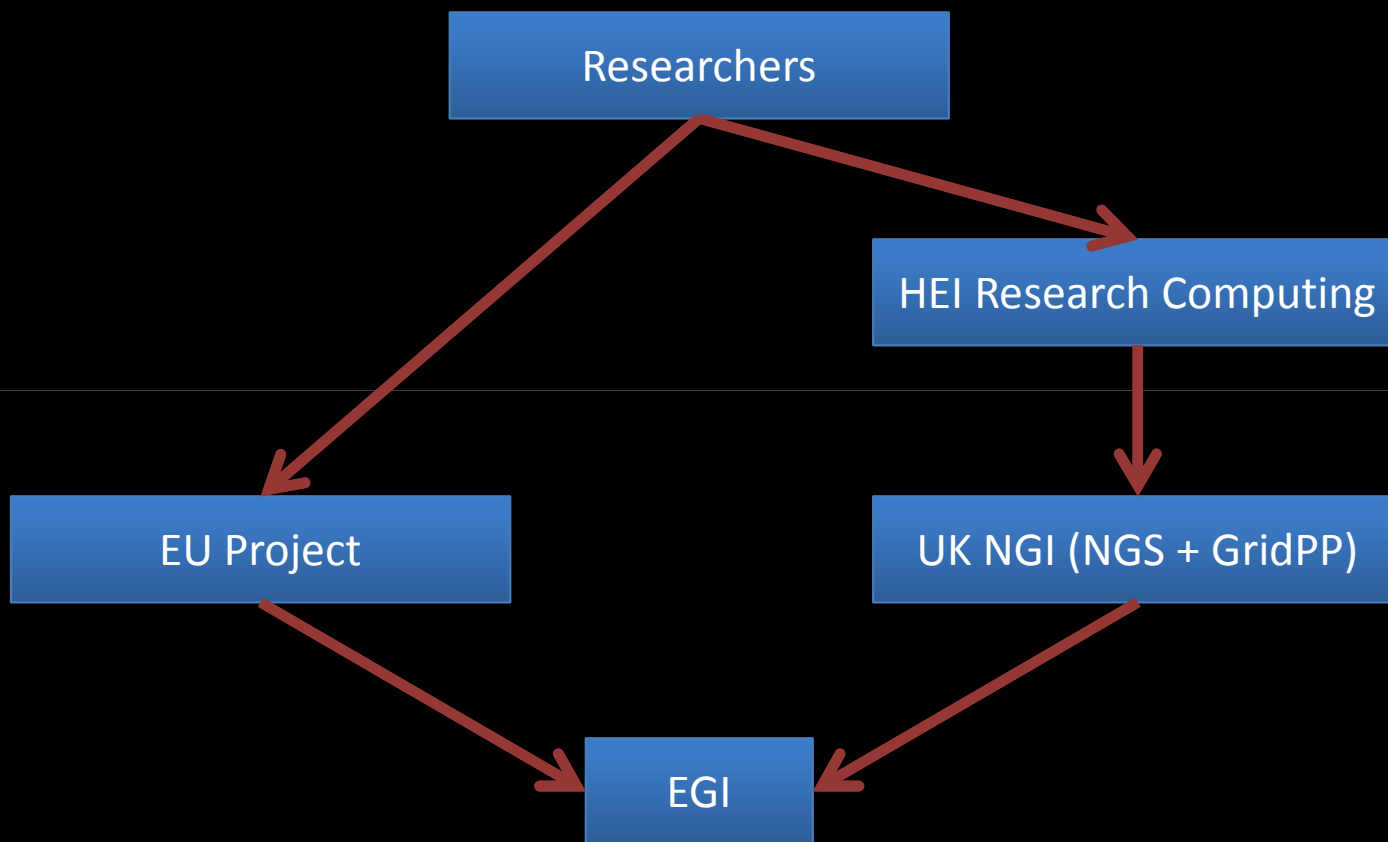
Connecting Infrastructure

Connecting Research



NGS

Gateway



Connecting Infrastructure

Connecting Research



Today

- Benefits from Westminster
 - Learnt
 - About providing services to users
 - About running research software in production



Questions

- Do we have the right mechanisms for institutional connection?
- How can we improve our services?
- Would a market between service providers really help?
- How should we be supporting you to support your users in ESFRI projects?