



# Accounting on the NGS

Simon Collins – DBA – Manchester University



Connecting Infrastructure

Connecting Research

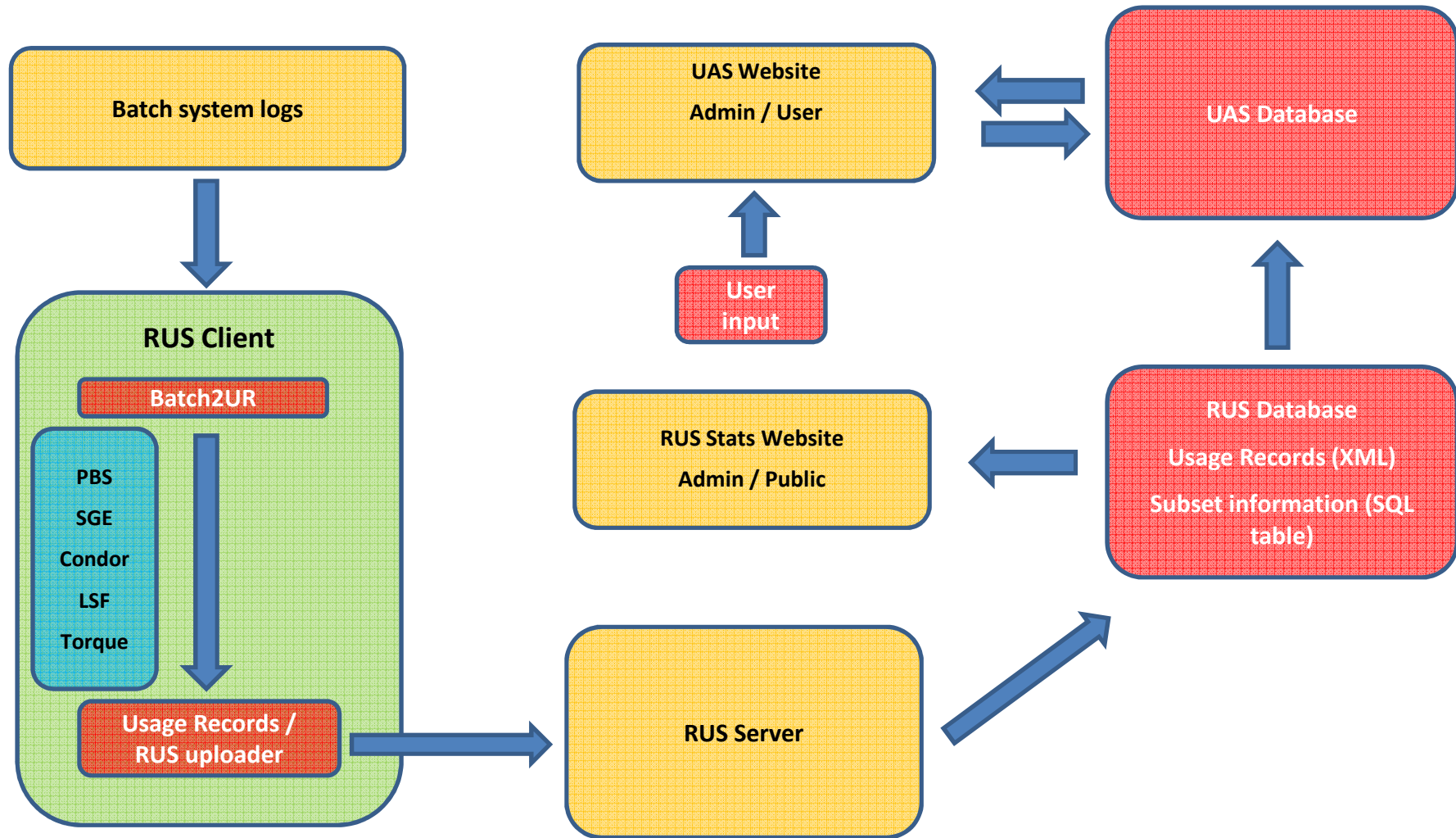


# NGS

## Introduction

- Accounting mechanisms presently offered
- Information they provide
- Ongoing developments
- Options for partners

# Historically on the NGS



## Top 20 Users of the NGS2 kit

### Overall Summary

Host	Cpu Days	(Of which globus)	% Utilisation
<a href="#">ngs.leeds.ac.uk</a>	1,912.27	50.35	24.10
<a href="#">ngs.oerc.ox.ac.uk</a>	86.57	0.00	1.09
<a href="#">ngs.rl.ac.uk</a>	2,568.25	0.00	32.36
<a href="#">ral-icg2</a>	0.00	0.00	0.00
<a href="#">ui2.scarf.rl.ac.uk</a>	5.94	4.68	0.07
<a href="#">uki-northgrid-man-hep</a>	0.70	0.00	0.01
<a href="#">uki-scotgrid-glasgow</a>	10.81	0.00	0.14
<a href="#">vidar.ngs.manchester.ac.uk</a>	1,947.86	97.64	24.54
<b>Total</b>	<b>6,532.41</b>	<b>152.67</b>	

1 - 8

### Users Summary

Name	Institution	No Jobs	CPU Days	Globus Days
<a href="#">David Cooke</a>	HUDDERSFIELD	38	1,005.45	0.00
<a href="#">Hans HEROLD</a>	WESTMINSTER	25	903.74	0.00
<a href="#">Jens Orell</a>	BANGOR	57	410.85	0.00
<a href="#">Nizar Al-Shari</a>	GLASGOW	19	385.89	0.00
<a href="#">Kishanmouly Arunugam</a>	MANCHESTER	60	225.78	0.00
<a href="#">Shuzhi Hader</a>	UCL	10	134.73	0.00
<a href="#">Paul Wilkinson</a>	EXETER	1673	133.08	0.00
<a href="#">Jean-Alain Grunthec</a>	EDINBURGH	7898	59.71	0.00
<a href="#">Matthew Smith</a>	LIVERPOOL	33	39.16	0.00

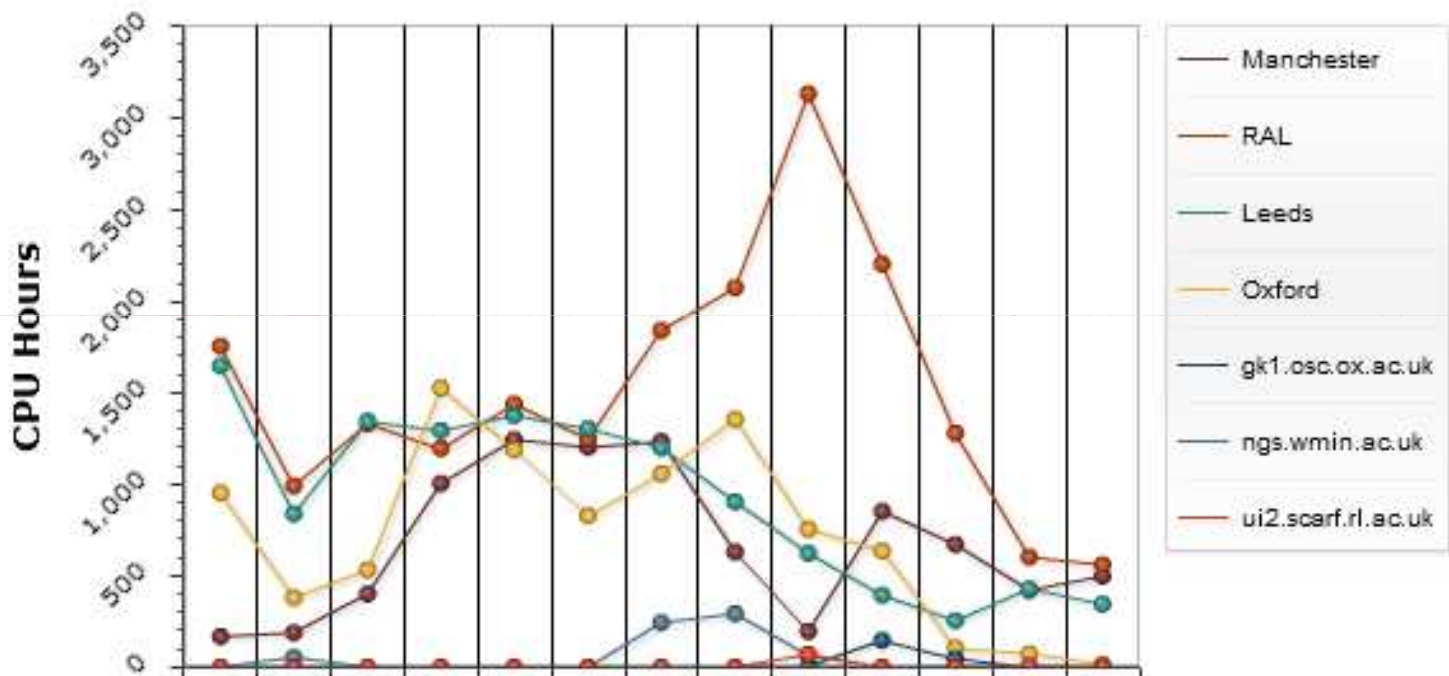
### Institution Summary

Institution	No Jobs	Cpu Days
<a href="#">CLRC</a>	2650	1,616.44
<a href="#">HUDDERSFIELD</a>	50	1,017.25
<a href="#">WESTMINSTER</a>	25	903.74
<a href="#">BANGOR</a>	79	424.08
<a href="#">GLASGOW</a>	25	393.30
<a href="#">MANCHESTER</a>	80	232.78
<a href="#">UCL</a>	29	141.96
<a href="#">EXETER</a>	1673	133.08
<a href="#">EDINBURGH</a>	8601	103.94

### Overall Summary

Host	Cpu Days	(Of which globus)	% Utilisation
<a href="http://ngs.leeds.ac.uk">ngs.leeds.ac.uk</a>	1,912.27	50.35	24.10

### Avg CPU Hours per day



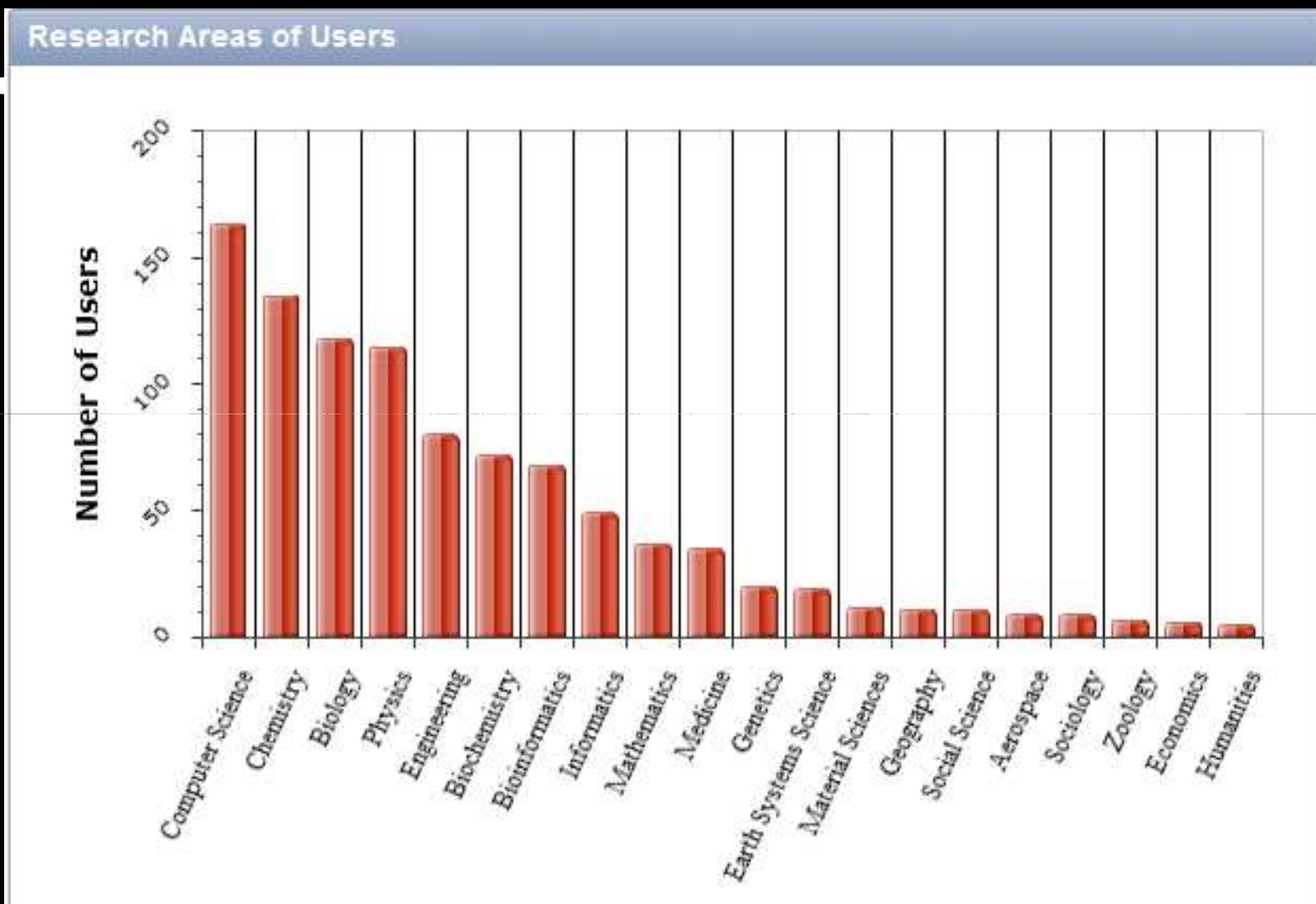
Shawn Hader	UCL	10	134.73	0.00
Paul Wilkinson	EXETER	1673	133.08	0.00
Jean-Marc Grumhac	EDINBURGH	7898	59.71	0.00
Matthew Smith	LIVERPOOL	33	39.16	0.00

MANCHESTER	80	232.78
UCL	29	141.96
EXETER	1673	133.08
EDINBURGH	8601	103.94



# NGS

How do the system's help us?



Connecting Infrastructure

Connecting Research

# Meanwhile, elsewhere on the Grid

Batch System Logs
APEI accounting Portal
Summary Database

EGEE ACCOUNTING PORTAL

GLOBAL View
VO MANAGER View
VO MEMBER View
SITE ADMIN View
USER View
REPORTS
METRICS PORTAL
LINKS

**UKI Normalised CPU time (kSI2K) per SITE**

**CUSTOM VOs. December 2009 - November 2010**

Site	Percentage
UKI-NORTHGRID-MAN-HEP	30.1%
UKI-NORTHGRID-LIV-HEP	29.3%
UKI-LT2-Brunei	16.3%
UKI-SCOTGRID-DURHAM	8.1%
UKI-SOUTHGRID-GLASGOW	4.1%
UKI-SOUTHGRID-BHAM-HEP	4.1%
UKI-SOUTHGRID-BRIS-HEP	3.3%
UKI-SOUTHGRID-OX-HEP	2.4%
UKI-NORTHGRID-MAN-HEP	2.4%
UKI-NORTHGRID-LIV-HEP	2.4%
RAL-LCG2	2.4%

- RAL-LCG2
- UKI-LT2-Brunei
- UKI-NORTHGRID-LIV-HEP
- UKI-NORTHGRID-MAN-HEP
- UKI-SCOTGRID-DURHAM
- UKI-SCOTGRID-GLASGOW
- UKI-SOUTHGRID-BHAM-HEP
- UKI-SOUTHGRID-BRIS-HEP
- UKI-SOUTHGRID-OX-HEP

Print Page

h: 11

org

- atlas
- camonlocalUser
- cosmo
- edinburgh
- euindia
- gitest
- gridtest
- icbi
- itwo

(C) CESGA 'EGEE View': UKI / normcpu / 2009:12-2010:11 / SITE-VO / custom (x) / ACCBAR-LIN / i 2010-11-16 19:14 UTC



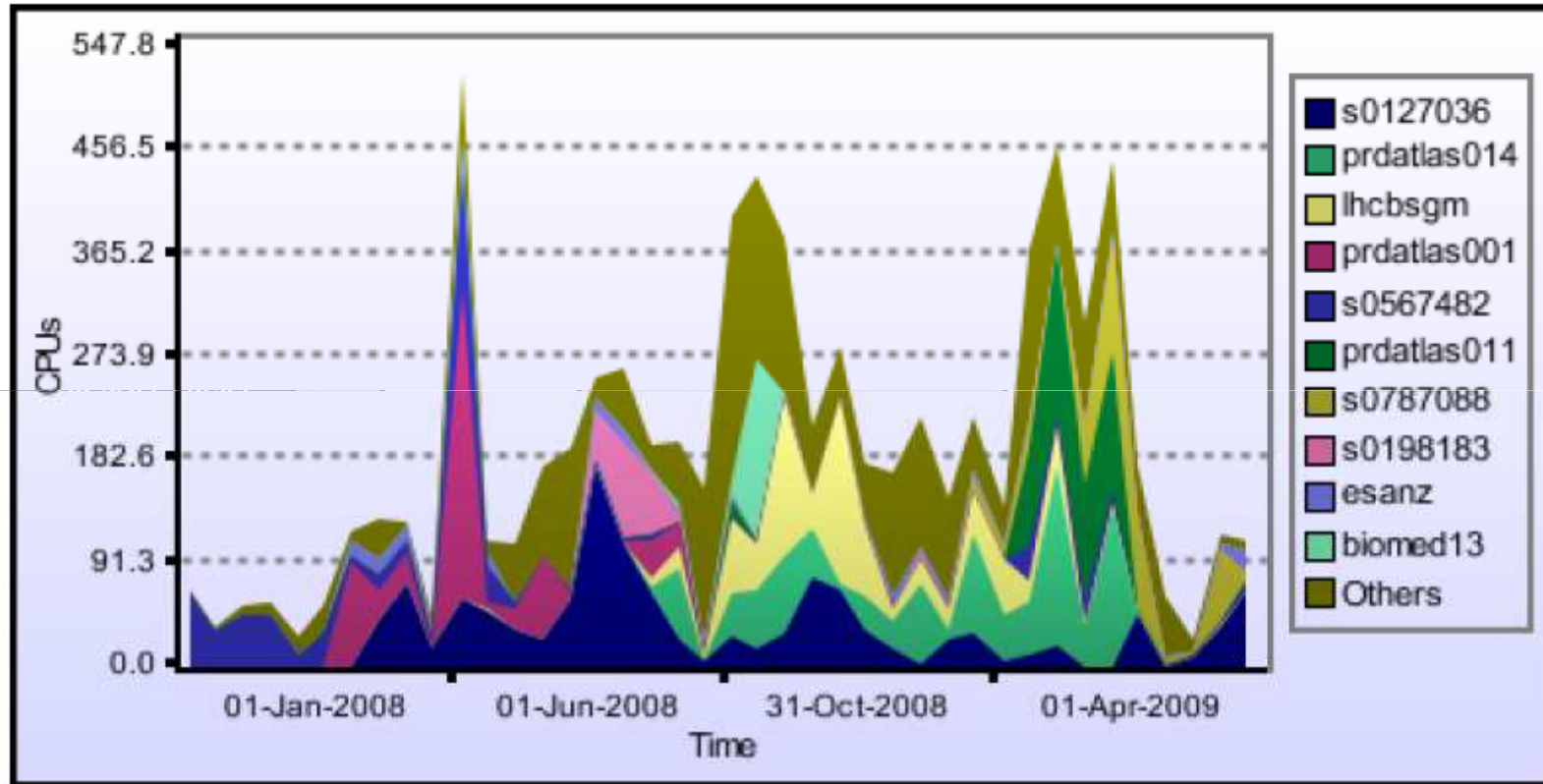
# NGS

## APEL Information

- Collects cpu time and normalisation
- Identified by UserDN, FQAN, Site, VO, date
- Summarised by
  - month/site/VO;
  - month/site/FQAN;
  - month/site/UserDN

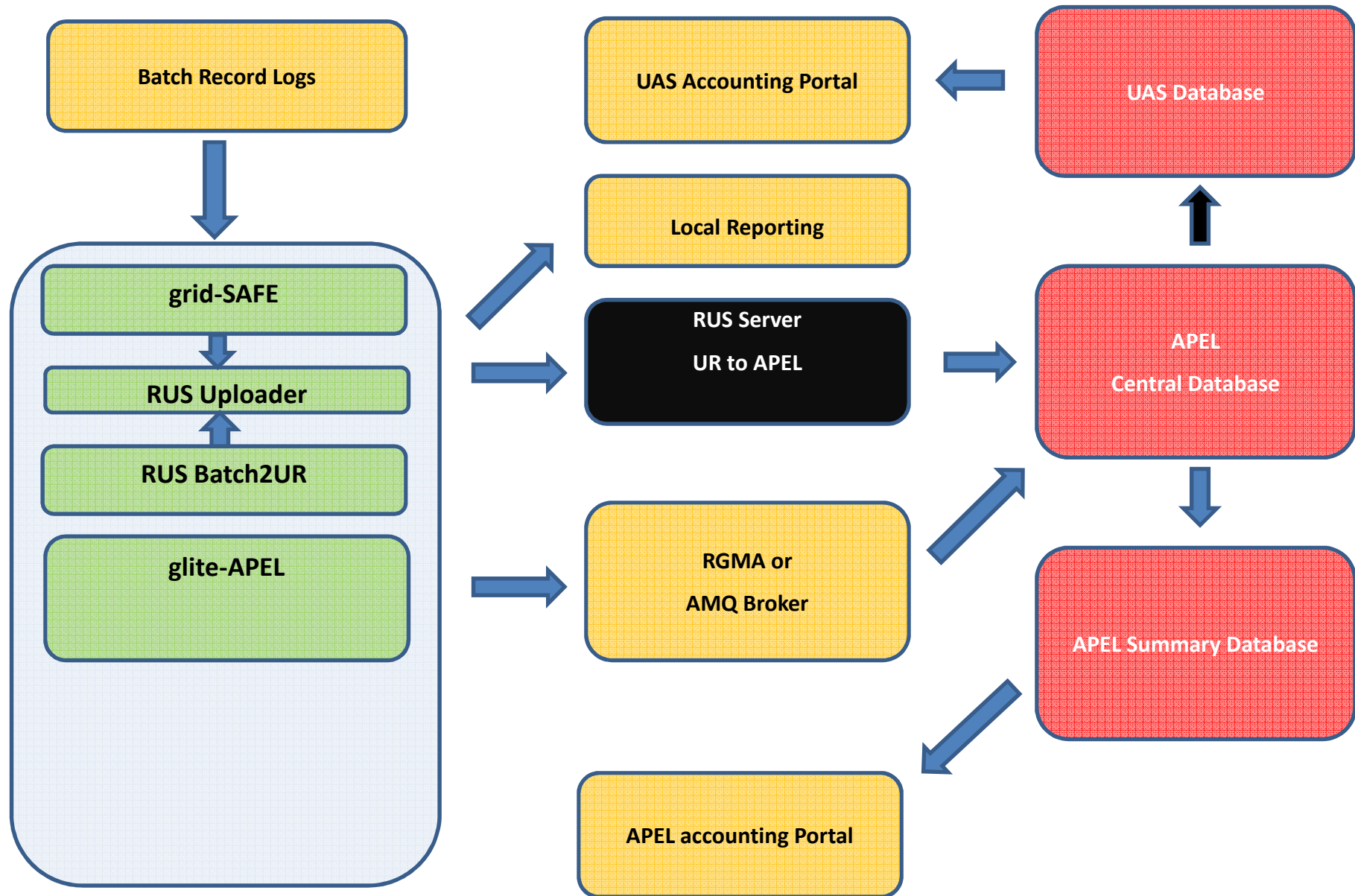
# Other developments – Grid-SAFE

Batch System Logs



Uploader

# Putting it all together (future plans)





# NGS

## Options for partners

- Choose which accounting client you use
  - RUS Client / grid-SAFE
  - APEL Specific Records
- NGS partner support can help you set any one of these options up
- Upload of accounting data will
  - Give you access to admin stats pages
  - Account usage against users / VOs
  - Hopefully, in future, allow for the trading of resources



Any Questions?

Event Twitter tag – #ngsif10

Link to NGS user survey – <http://bit.ly/NGS2010>

Connecting Infrastructure

Connecting Research